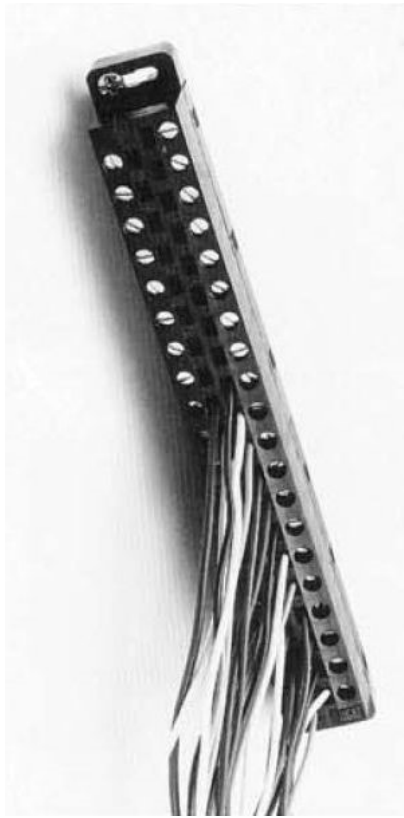


# 2500-40F / 2559-FPC I/O Connectors



## Description

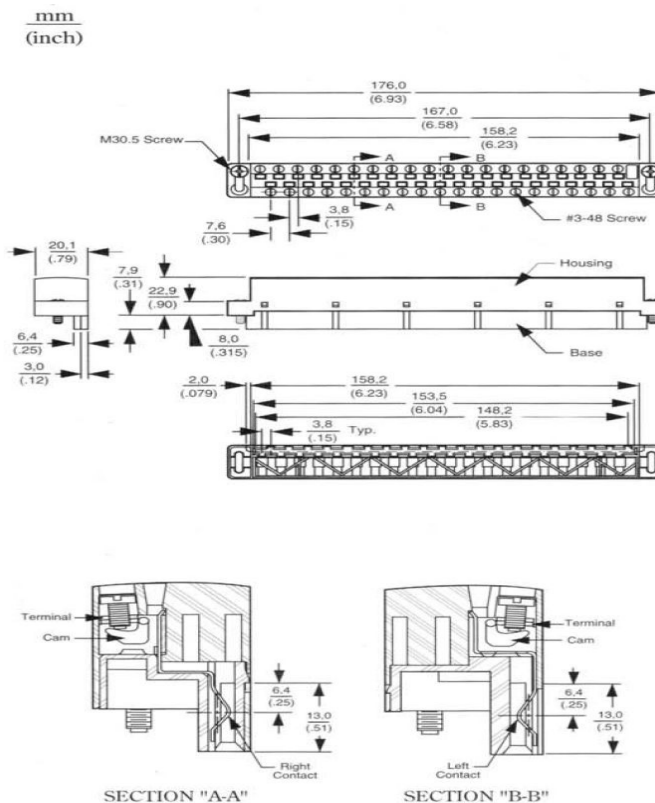
Most 2500-Series I/O modules employ a specially-designed 40-position screw-terminal connector for terminating the field I/O wiring. This connector allows termination of multiple wires with access to both the wire and the screw clamp from the front of the module.

## Features

- 2500-40F Replaces Siemens® 2587705-8011
- Front access to screws and wires
- 14-22 AWG
- 15A, 300V rating
- Special 2559-FPC 40-position connector includes cold junction compensation for 2559-TC Thermocouple input module

**Important Note:** Do not tighten screws beyond 5 in-lb torque rating, as damage can occur

2500 Series® PLC System  
Product Bulletin



## Specifications

- Housing: Glass filled polyester  
UL recognized flammability classification 94V-0, black, 130°C max operating temperature
- Contacts: Copper alloy, selective gold over nickel
- Screws: #3-48 steel, zinc plating with clear chromate coating
- Wire cage: Steel, zinc plating with clear chromate coating
- Cam: Steel alloy, zinc plating with clear chromate coating
- Ratings: 1 5A, 300V, (limited space ratings)
- Wire range: 4-22 AWG (solid or stranded)
- Tightening torque: 5 in-lb
- UL File #245800



**Control Technology Inc.**

5734 Middlebrook Pike, Knoxville, TN 37921-5962  
Phone: +1.865.584.0440 Fax: +1.865.584.5720  
www.controltechnology.com