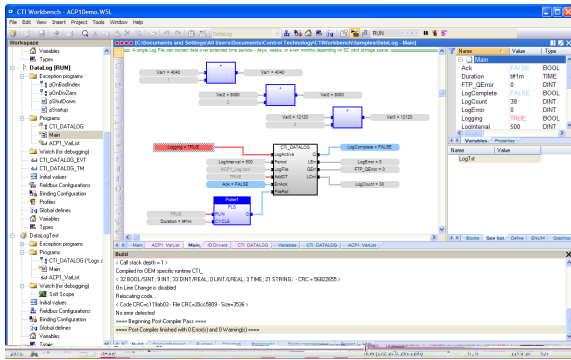


2500-WB-USB CTI Workbench

IEC-61131 Integrated Development Environment



Description

The CTI Workbench IDE is used for configuration of module parameters and development of the user application program for the new generation of CTI IEC-61131 compatible products, including the 2500P-ACP1 Application Coprocessor. CTI Workbench is a full-featured development environment with integrated programming editor, I/O and fieldbus configuration tool, debugger, data monitor, and simulator. CTI Workbench is PLCopen certified, and may be used to develop programs that adhere to IEC-61131-3 requirements.

The application program may be developed in any of five IEC-61131 programming languages:

- Ladder Diagram (LD)
- Function Block Diagram (FBD)
- Structured Text (ST)
- Instruction List (IL)
- Sequential Function Chart (SFC)

A complete library of functions is provided to perform the following tasks:

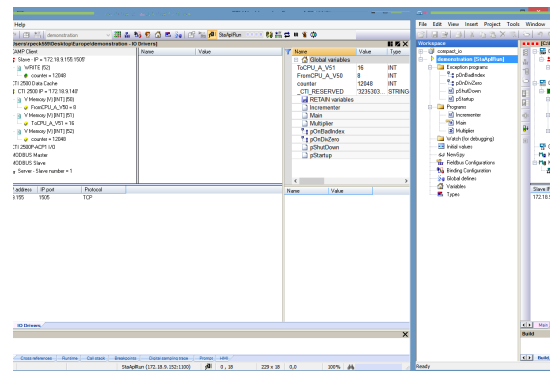
- Complex mathematical computations
- Boolean logic
- File management
- String handling
- Timer/Counter operations
- PID control
- Real-time data logging

CTI Workbench is compatible with Microsoft Windows[®] 7, 8, 8.1, and 10.

Features

- Program editors for all five IEC languages

- Development Aids
 - Graphical editor for creation of animated objects for monitoring and HMI applications
 - Customization of menus, windows, fonts, display colors, and editing rules
 - Program translation between ST, LD, FBD, and IL languages
 - Navigation tools for compare, search, and editing across all programs
 - Automatic documentation and Revision History reporting
 - Full syntax coloring
- Time-Saving Features
 - Support of OLE drag-and-drop in all editors
 - Quick-edit mode with "on-the-fly" variable declaration
 - Auto-completion of variable and function names within editors

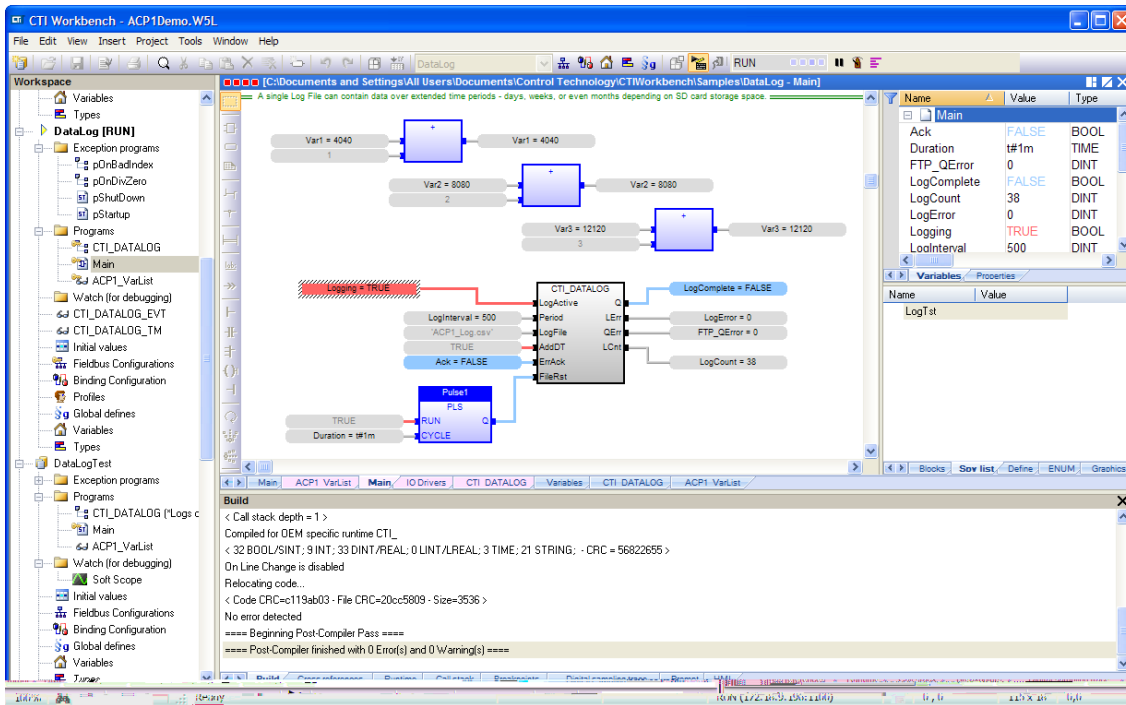


- Monitoring and Debugging
 - Application monitoring features such as variable "spy lists", soft-scope trend charts, digital sampling trace, and run-time status displays
 - Full array of debugging tools for PC simulator and run-time target:
 - Set Breakpoints and Tracepoints
 - Program can be paused or set to cyclic or step-by-step execution mode.
 - Call stack display shows nested execution levels for function blocks and sub-programs
- Network Communications Supported (2500P-ACP1)
 - CAMP Client (TCP, UDP, Multicast)
 - Open Modbus (Client, Server)
 - Ethernet/IP (I/O Scanner, I/O Adapter, Explicit Message Adapter, Tag Client)
 - Serial Modbus (Master, Slave)
 - General ASCII (Send, Receive)
 - Network Data Exchange



Control Technology Inc.
 5734 Middlebrook Pike, Knoxville, TN 37921-5962
 Phone: +1.865.584.0440 Fax: +1.865.584.5720
 www.controltechnology.com

ROCK SOLID PERFORMANCE. TIMELESS COMPATIBILITY.



Maintenance and Support Options

Workbench includes free upgrades for 1yr after the initial purchase. After that year you can continue to use the software, but you will not be able to run new versions of the software which are released after the expiration of your initial term. In order to have access to run newer versions, you can purchase a 1 or 2 year software maintenance agreement using the part numbers in the table below.

Ordering information

2500P-WB-USB
2500P-WB-USB-PR

2500P-WB-USB-S3
2500P-WB-USB-S6
2500P-WB-AMP1
2500P-WB-AMP2
2500P-WB-RMP1

2500P-WB-RMP2

Workbench IDE, Standard License
Workbench IDE, Standard License
(special promotional version with purchase of 2500P-ACP1)
Workbench IDE, Subscription License, 3 mos
Workbench IDE, Subscription License, 6 mos
Workbench IDE, Annual Maintenance, 1yr
Workbench IDE, Annual Maintenance, 2yr
Workbench IDE, Annual Maintenance Reinstatement if
expired less than 1 yr
Workbench IDE, Annual Maintenance Reinstatement if
expired 1-2 yr