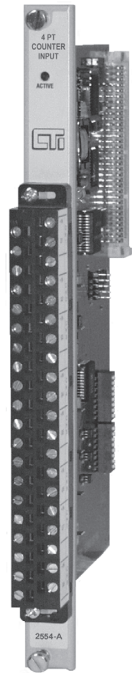


# 2554-A 4-Channel High-Speed Counter Input Module



## Description

The 2554-A is a 4-channel isolated high-speed counter input module designed to be compatible with the CTI 2500 Series or Simatic® 505 I/O base. The 2554-A operates in three selectable modes: frequency, period, or general counter. In addition, two channels may be configured together for quadrature mode operation.

The 2554-A is extremely useful when there is a requirement to measure rapidly changing pulse inputs with a high degree of accuracy and convert them to counts, frequency, or period measurements. The module can also trigger external events based on preset counter values and auto-reset the count without missing an input pulse.

## Application

The 2554-A is ideally suited for precise position measurement applications where an external edge reset is required. Other applications such as continuous flow monitoring and interface to encoders are targeted with the 2554-A.

## Specifications

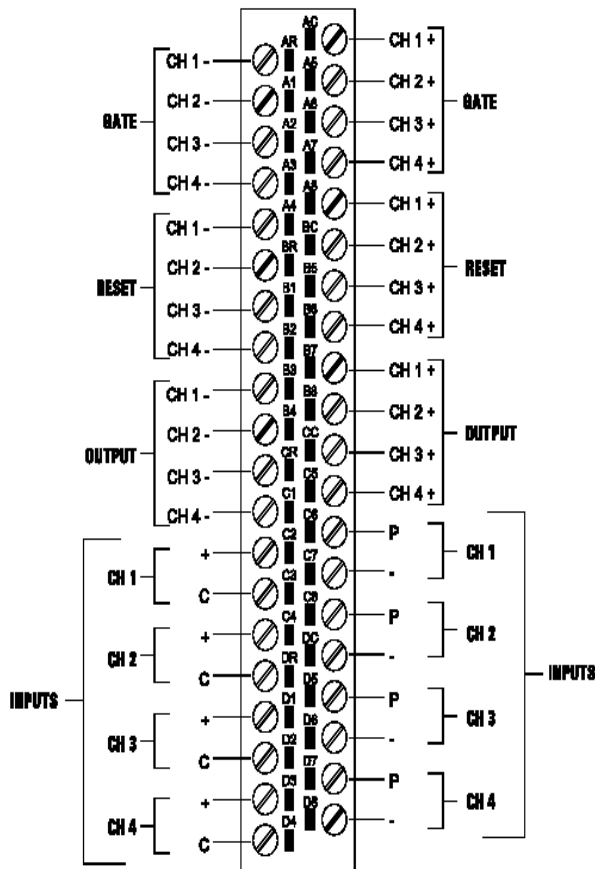
Maximum Input Frequency: 65 KHz  
Input Protection: 50 VRMS continuous  
20,000 Volts ESD  
Filtering Time Constant:  
0.3 Sec (digital filtering enabled)  
Update Time: 100 mSec for all four channels  
Discrete Outputs: 4 (one per channel)  
11 to 60 VDC, 1.5A, fused  
Isolation: 1500 VDC channel-to-channel  
1500 VDC channel-to-PLC  
Connectors: Removable  
Wire Gauge: 14-22 AWG  
Backplane Power: 2.5 Watts @ +5 VDC  
Module Size: Single-wide  
Operating Temperature:  
0° to 60°C (32° to 185°F)  
Storage Temperature:  
-40° to 85°C (-40° to 185°F)  
Relative Humidity:  
5% to 95% (non-condensing)  
Agency Approvals: UL, UL-C,  
FM (Class I, Div 2), CE  
Shipping Weight: 1.5 lbs. (0.68 Kg)



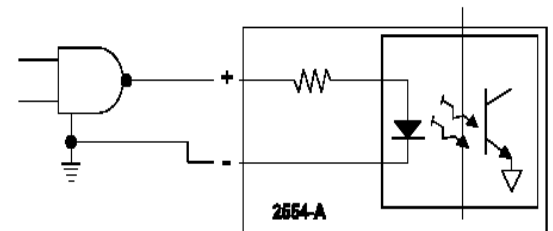
Control Technology Inc.

5734 Middlebrook Pike, Knoxville, TN 37921-5962

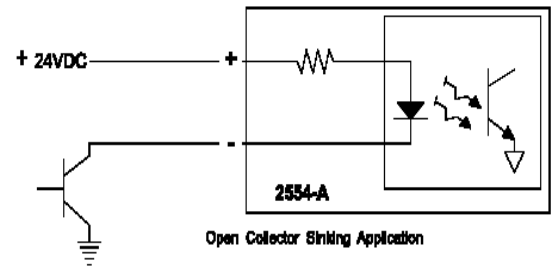
Phone: 865/584-0440 Fax: 865/584-5720 www.controltechnology.com



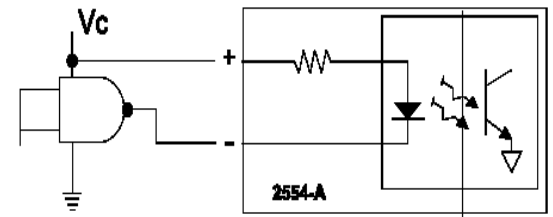
2554-A Connector Diagram



TTL Sourcing Application

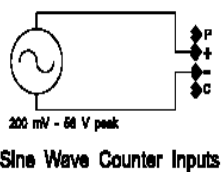


Open Collector Sinking Application

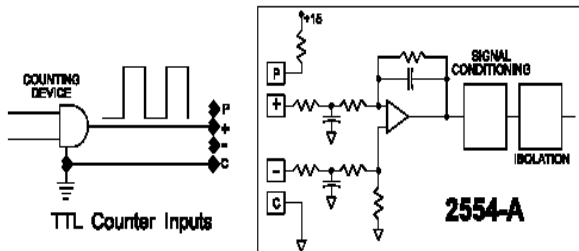


TTL Sinking Application

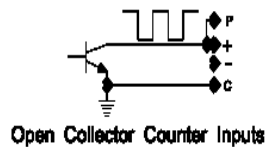
Gate and Reset Input Circuits



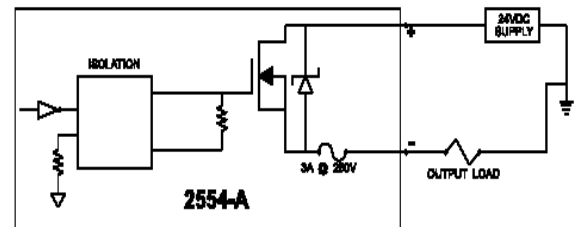
Sine Wave Counter Inputs



TTL Counter Inputs



Open Collector Counter Inputs



REPLACEMENT FUSE: LITTLEFUSE 2173.15 OR BUSSMAN GMA-3A

Output Circuit