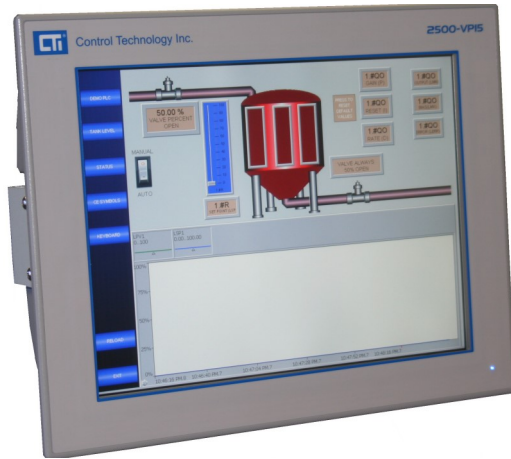


2500 Series® Flat-Panel PCs with Windows® 7 Embedded



Description

The 2500 Series Flat-Panel PC is a rugged, industrial-grade computer designed for harsh environments. It features a 12-inch wide-view LCD display with a resolution of 1280 x 800 pixels. The device is built with a durable, metal enclosure and is designed for easy installation and maintenance. It supports a variety of hardware configurations, including Intel processors, memory, and storage options. The system is pre-installed with Windows 7 Embedded, providing a familiar and powerful operating environment for industrial applications.

Hardware Specifications

CPU Intel® Core™
J. 3, - 2CDv RL-1%
J. 2, , - 2CDv RL-. %

Memory . C @ @ N. O @ N I

Network . t Na mag NPH4---
-, +, , +, , , , o a) P

Storage ki l pBhod Pul a E
Ok gaps ed -2C

LCD Display -1 PBP H @ RL-1%
12" PBP H @ RL-. %

Resolution -, . 0 t 324(TC

Backlight Life 1, (, , , dkqro

Luminance 1, , , #

Touch Screen 1) s ea(ra o e e a

Other Ports LO. l k qoa RL-1%
QO . , . l k r p RL-1%
QO . , 0 l k r p RL-. %
Qare h 0 l k r p %

Power . 0 R @ +) -, (.

Environmental

KL an pe c pai l , pk 1, RL-1%
, pk 11 RL-. %

Qkn ca pai l), pk 3,
Dqi e @
-,) 51 k k a o e c

Ren pk - Cri o

E crao J A I 0 (E 21

Mechanical

@ a o e o /5, t 1. / t / -, i i RL-1%
-10 t . , 2 t - . . e RL-1%
/ . 2 t 00 t . 15 i i RL-. %
- . 4 t - 3/ t -, . e RL-. %

S a e d p 0 0 g c 5 3 h %

Shipping

@ a o e o 1, , t . , , t 02, i i
. , t 4 t - 4 e

S a e d p 3 g c - 1 h %

Approvals

QH(QH) (A
hoo - @ e . la e c %

Warranty

. ua ro

Software Specifications

KL an pe c Ouopai
Windows® 7 Embedded



Control Technology Inc.

13/01 e la r k g L e a (k t r a (P J / 35. -) 152.
L d k a 6 - 421 140, 00, B t 6 - 421 140 13. ,
s s s k p k i a d k l k c u k i

2500 Series[®] Flat-Panel PCs with Windows[®] 7 Embedded

Maintenance and Support Options

Options include a standard 1-year On-Site Limited Warranty and a 2-year On-Site Limited Warranty with a 2-year Next Business Day Response Time.

BASIC SUPPORT

- Basic Support includes a 24-hour phone support line and a 2-year Next Business Day Response Time.

EXTENDED HARDWARE WARRANTY

- Extended Hardware Warranty includes a 2-year On-Site Limited Warranty with a 2-year Next Business Day Response Time.
- Extended Hardware Warranty includes a 2-year On-Site Limited Warranty with a 2-year Next Business Day Response Time.
- Extended Hardware Warranty includes a 2-year On-Site Limited Warranty with a 2-year Next Business Day Response Time.
- Extended Hardware Warranty includes a 2-year On-Site Limited Warranty with a 2-year Next Business Day Response Time.

Ordering information

HMI Panel

.1,,)RL-1)J0)S 3 15" Bright LED (See also 3-Axis (JA) 0
.1,,)RL-.)J0)S 3 12" Bright LED (See also 3-Axis (JA) 0

Accessories

.1,,)RL)LO 21S - , + , R Lks an Oqll hu
.1,,)RL)LO JKPA6 u.0R + , (. lks anoqll hu a qoa
.1,,)RL)RAO) @LP) E RAO i kq p n gapg

Maintenance and Support

.1,,)RL-1)ATS - Atpa a D ns ra S m pu(-)ua n p k p hs m pu / ua ro %
.1,,)RL-1)ATS . Atpa a D ns ra S m pu(.)ua ro p k p hs m pu 0 ua ro %
.1,,)RL-1)ATS / Atpa a D ns ra S m pu(/)ua ro p k p hs m pu 1 ua ro %