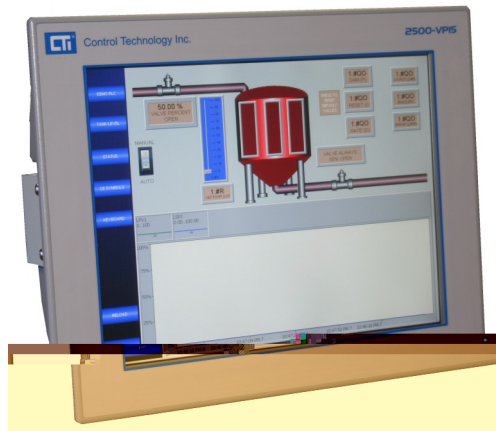


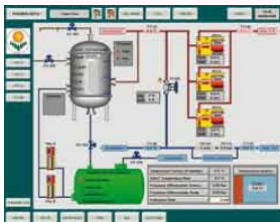
2500 Series[®] HMI Panels



Description

2500 Series[®] HMI Panels are designed to allow easy connection and configuration of HMI applications on CTI 2500 Series[®] Processors. The panels are based on the latest Intel Atom processor technology and feature a high-brightness LCD panel for easy readability under industrial conditions. The combination of Windows[®] 7 Embedded and the COPA-DATA Zenon HMI engine offers wizards-based automatic engineering, object-oriented parameterization, and efficient reuse of projects and modules. With Zenon you can develop and configure a wide variety of HMI applications—from operator panels to full SCADA process systems—using a single development tool.

An optimized driver is included for connecting to CTI 2500 Series[®] PLCs over Ethernet. The panel can also communicate with many other PLC systems, including Siemens S5/S7 and Allen-Bradley.



Food & beverage and pharmaceutical users can benefit from data recording and access regulations in strict accordance with FDA 21 CFR Part 11 – all at the click of a mouse.

When using CTI 2500 Series[®] Processors, program documentation (tag names) can be imported from your PLC Workshop program to make application development easier.

Hardware Specifications

CPU	Intel [®] Atom™ N270 1.6GHz
Memory	2GB DDR2 SDRAM
Chipset	Intel [®] 945GSE + ICH7M
Network	2 x Realtek RTL8111B 10/100/1000Base-T
Storage	CompactFlash Type II Socket with 8GB
LCD Display	15" TFT LCD
Resolution	1024 x 768, XGA
Backlight Life	50,000 hours
Luminance	550 cd/m ²
Touch Screen	8-wire, resistive
Other Ports	PS2 Keyboard/Mouse USB 2.0 (2 ports) Serial (4 ports)
Power	24VDC +/-10%, 2A

Environmental

Operating temp	0 to +50C
Storage temp	-20 to +60C
Humidity	10% - 95% noncondensing
Vibration	1Grms
Ingress	NEMA4, IP65

Mechanical

Dimensions	390 x 52.3 x 310mm 15.35 x 2.06 x 12.2 in
Weight	4.4kg (9.7 lb)

Shipping

Dimensions	500 x 200 x 460mm 20" x 8" x 18"
------------	-------------------------------------

Weight 7kg (15 lb)

Approvals

UL, UL-C, CE Class 1 Div 2 (pending)

Warranty

2 years

Software Specifications

Runtime System

Maximum application size is limited only by memory. No individual limits on screens, variables, or objects.

Tag count	256-2048 (depending on license purchased)
Tag definition	1 tag = 1 memory location read from PLC

Application Development System

Computer requirements

Windows[®] XP, Vista, Windows[®] 7, Windows[®] 8



Zenon HMI Engine Features

Zenon is a full-featured HMI and SCADA system which allows development of applications from simple operator panels to complex server-based SCADA with redundancy—all using a single development tool.

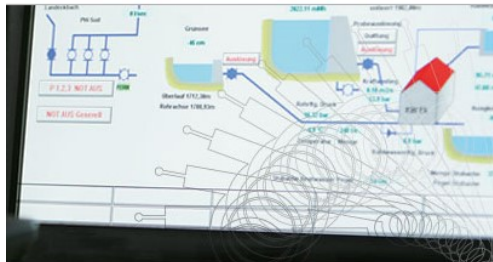
Reduce the time pressure on your projects by relying on intelligent wizards and on software that is geared towards usability. Give your engineers a HMI/SCADA system that allows



them to solve even the most challenging tasks in a secure, fast and simple way – Zenon. With just one software package, you will benefit from important functions for successful

HMI/SCADA projects:

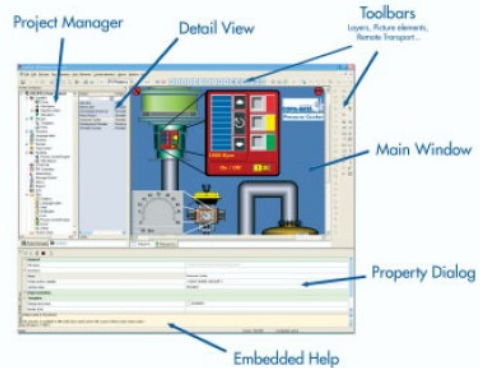
- Multi-project editor—open and work on multiple projects at once, freely sharing objects between projects
- Optimized driver for CTI 2500 Series® supports all memory types and data types
- Optional Extended Trend and Historian (Starter Edition) which allows historian files to be saved in multiple formats
- Easy, frame-based screen design allows quick changes to one, many or all screens in the project
- Powerful function editor replaces “scripts” in conventional HMIs to provide high level control of the application
- Make changes to the application while running
- Chronological Event List (CEL) object for tracking and recording events in the system
- Alarm Manager List (AML) object for dis-



playing and managing alarms



- Full User Administration for setting individual user rights down to the object level
- Power Recipe Manager for batch-based processes
- Ability to connect to the HMI Panel from any PC using a web browser (option)
- Automatic Engineering—Smart wizards perform routine tasks and relieves the workload on your engineers. Free your mind for efficient solutions.
- Object-oriented Parameterization—No more tedious programming work. Parameterize objects easily and efficiently with a mouse click and reuse them again and again.
- Intelligent Integration—One central data



source for a better overview, less errors and reduced costs – open to any connection.

- Efficient Reuse—Why start over every time? Reuse projects and modules with Zenon’s smart import and export functions.
- Elegant Networking—Create fast Zenon networks – even with complex structures – with only a few mouse clicks.
- Local and worldwide—You can choose the languages you want to use for Engineering and in the Runtime. You can then simply switch between them at any time.

Maintenance and Support Options

Standard warranty included with 2500 Series® HMI Panels consists of 2yr warranty on hardware and 60 days warranty/upgrades on software. BASIC SUPPORT is included at no additional charge.

BASIC SUPPORT

- Free lifetime support by email is standard on all HMI panels. All BASIC SUPPORT requests are processed in the order they are received.

PREMIUM ANNUAL SUPPORT

- Includes priority telephone support with response in 1 business day

EXTENDED HARDWARE WARRANTY

- Available in 1yr, 2yr, 3yr terms
- Must be purchased within 60 days of the ship date of the HMI panel
- Extends your hardware warranty for 1, 2, or 3 years
- Includes advanced replacement for warranty hardware failures (2 business days), UPS ground shipment (United States only)

ANNUAL RUNTIME SOFTWARE MAINTENANCE

- Includes 1-year free upgrades on the Zenon runtime software installed on the HMI panel
- Must be purchased within 60 days of the ship date of the HMI panel

ANNUAL DEVELOPMENT SOFTWARE MAINTENANCE

- Includes 1-year free upgrades on the Zenon Application Development Software for Windows®
- Must be purchased within 60 days of the ship date of the HMI panel

Ordering information

HMI Panel

2500-VP15-N4-W7R	15" HMI Panel, Windows® 7 Embedded, NEMA4, 256 tag
2500-Z256-512	Runtime 256-tag to 512-tag upgrade
2500-Z256-1024	Runtime 256-tag to 1024-tag upgrade
2500-Z256-2048	Runtime 256-tag to 2048-tag upgrade
2500-Z512-1024	Runtime 512-tag to 1024-tag upgrade
2500-Z512-2048	Runtime 512-tag to 2048-tag upgrade
2500-Z1024-2048	Runtime 1024-tag to 2048-tag upgrade

Runtime Software Options

2500-Z-ETAS	Extended Trend and Historian (Starter Edition)
2500-Z-WSP	Web Server Pro Light

Development Software

2500-Z2K-DEV-USB	Zenon Application Development Software (Editor), maximum 2048 tags, USB Dongle License Key
------------------	--

Accessories

2500-VP-PS	65W 110/220 VAC Power Supply
2500-VP-PSC	NOTE: any 24V +/- 10%, 2A power supply can be used 3-pin power supply connector
2500-VP-VESA-ADPT-KIT	VESA mount bracket kit

Maintenance and Support

2500-VP15-ASC	Premium Annual Support
2500-VP15-EXW1	Extended Hardware Warranty, 1-year (total warranty 3 years)
2500-VP15-EXW2	Extended Hardware Warranty, 2-years (total warranty 4 years)
2500-VP15-EXW3	Extended Hardware Warranty, 3-years (total warranty 5 years)
2500-Z256-RT-AMP	Annual Runtime Software Maintenance, 256 tag
2500-Z512-RT-AMP	Annual Runtime Software Maintenance, 512 tag
2500-Z1K-RT-AMP	Annual Runtime Software Maintenance, 1K tag
2500-Z2K-RT-AMP	Annual Runtime Software Maintenance, 2K tag
2500-Z2K-DEV-AMP	Annual Development Software Maintenance, 2K tag

NOTE: when purchasing a Runtime Tag Upgrade, you must supply the serial number of your previous license.