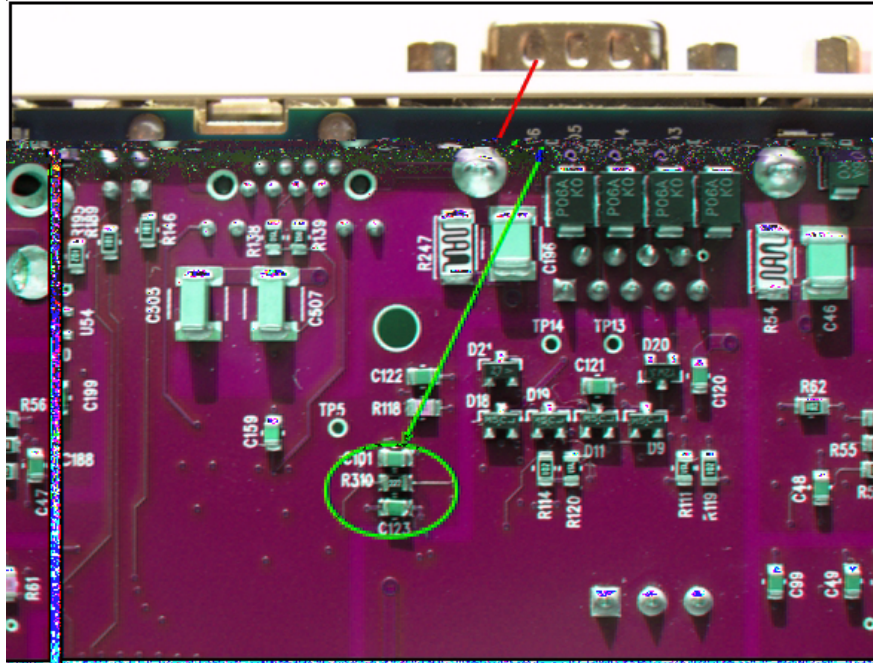


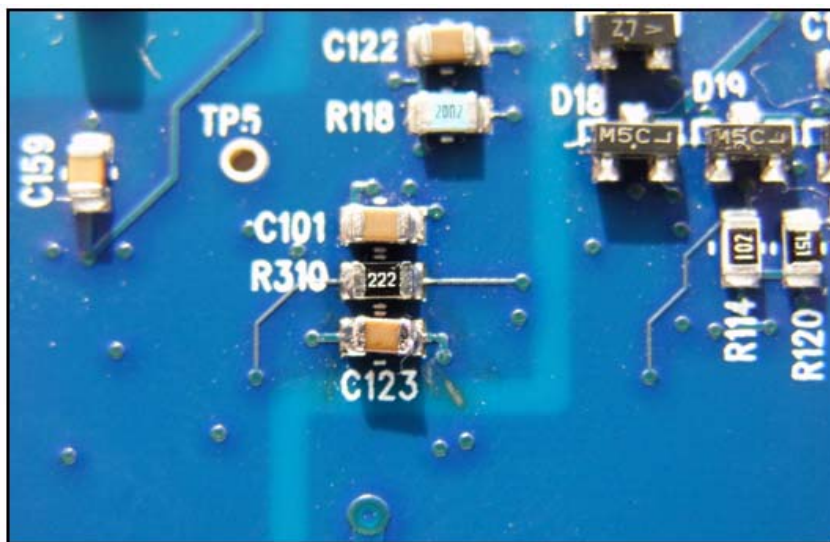
Identifying Hardware Revision Level 1 on 2500 Series™ Processors

A design change was made on CTI 2500 Series Processors in late 2007 to improve noise immunity performance on the remote I/O networks. The revision is referred to as “level 1” and can be identified as follows:

Locate Resistor R310 on the backside of the PCB close to the RS232 connector of the front panel.



The value on the Resistor R310 should read “222”.



Control Technology Inc.

5734 Middlebrook Pike, Knoxville, TN 37921-5962

Phone: 865/584-0440 Fax: 865/584-5720 www.controltechnology.com