

Application Note:

FTP Server Setup on computers running Windows-XP **For use with 2500P-ACP1**

The CTI 2500P-ACP1 is capable of transferring data files to a remote FTP Server. This document provides information for those who do not currently have a FTP Server installed and operating. Setting up an FTP Server at a plant can raise network security concerns, so we highly recommend working with your IT staff and following any rules in place for adding functionality to an existing network.

Here are some options for setting up your own FTP Server. This list is no means conclusive, as there are lots of available options.

- 1) FileZilla FTP Server (free PC based server program - see instructions in section below)
- 2) Microsoft IIS (included with most versions of Windows) includes an FTP Server (also PC based). This works well once set up properly, but it can be difficult to set up and configure users and security. (You have been warned!)
- 3) Most Linux distributions include FTP server support.
- 4) Purchase a NAS (Network Attached Storage) device that has embedded FTP Server support. These are usually configurable from a built in web server page (examples include: Western Digital MyCloud EX2 series, Seagate NAS, or Addonics NAS Adapter)

The remainder of this document provides details for installation and setup of FileZilla FTP Server on computer running Windows-XP. Filezilla is an open source software solution distributed free of charge. The program is easily customized for user connections, accessibility, and security features.



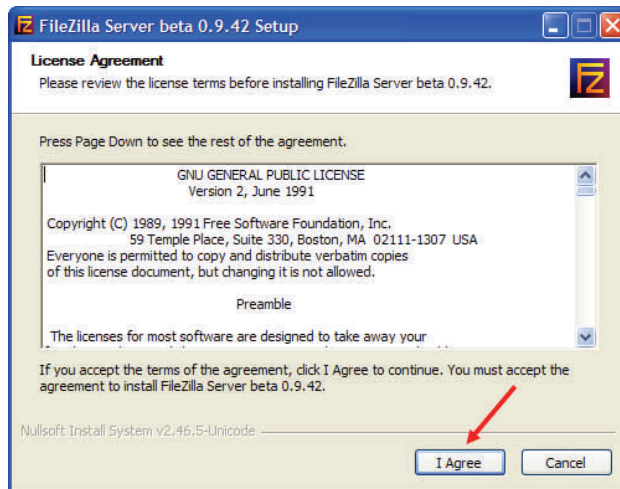
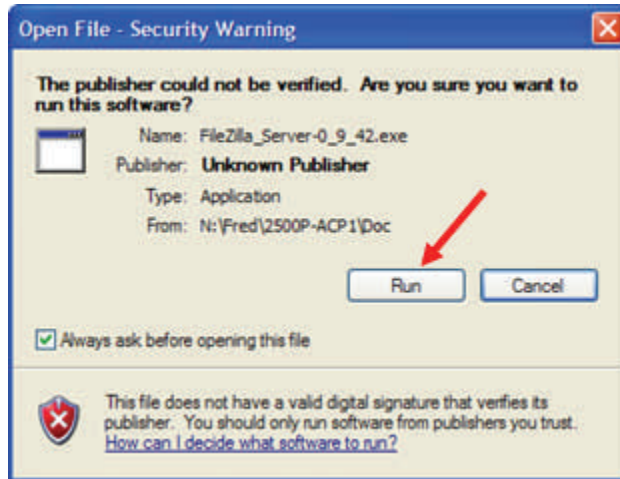
Control Technology Inc.

5734 Middlebrook Pike, Knoxville, TN 37921-5962
Phone: +1.865.584.0440 Fax: +1.865.584.5720
www.controltechnology.com

Filezilla FTP Server Installation Instructions:

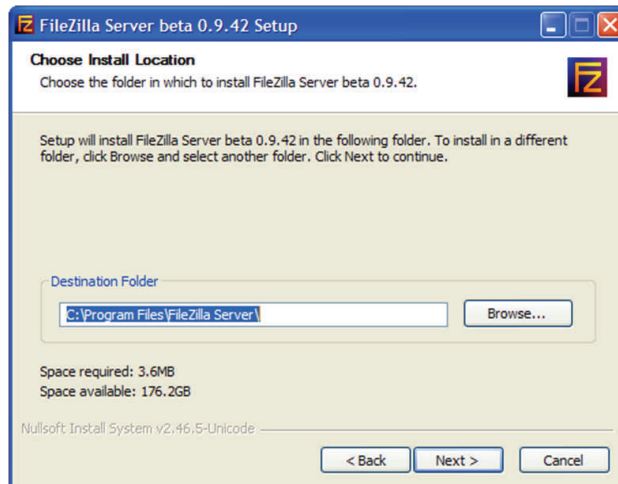
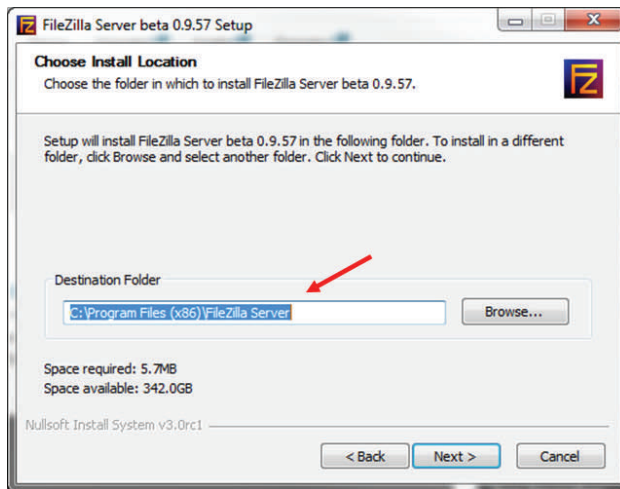
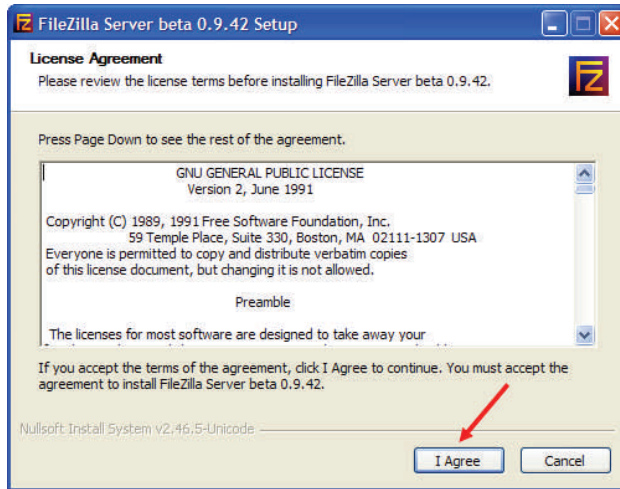
- 1) Download the appropriate version from the CTI website:
www.controltechnology.com/downloads (login is required)

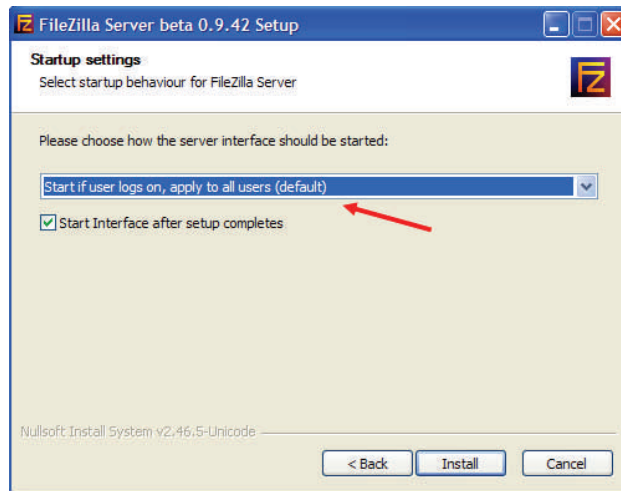
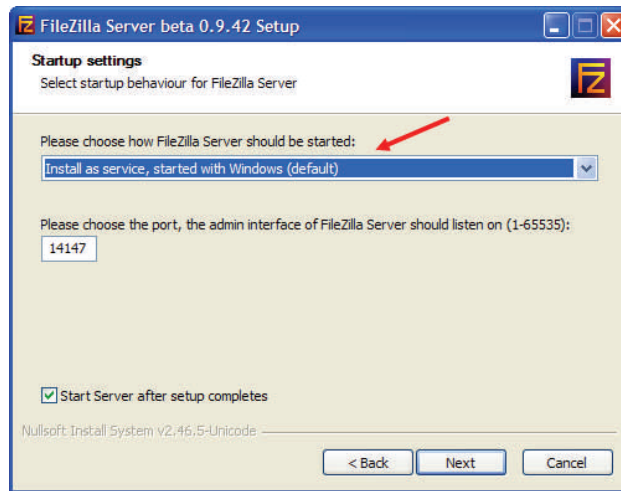
Download Procedure:



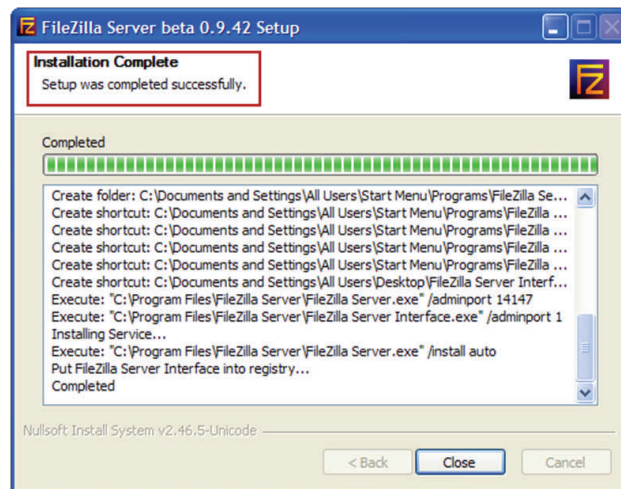
2) Installation Procedure:

Standard installation is sufficient for most applications.



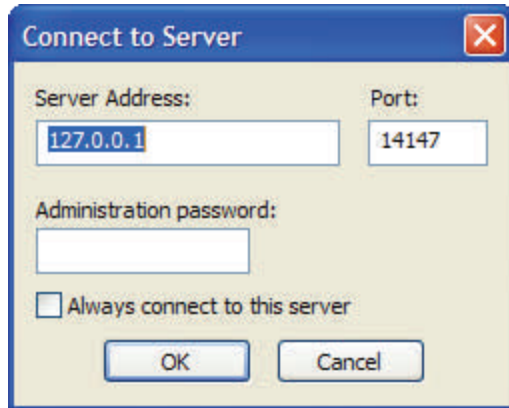


This shows the FTP Server installed correctly:

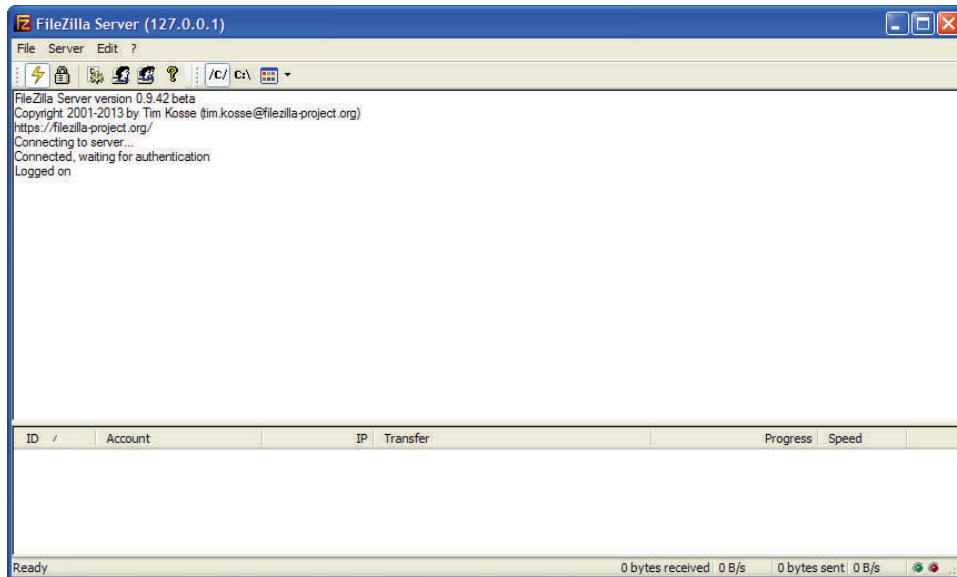


3) Configure FTP Server.

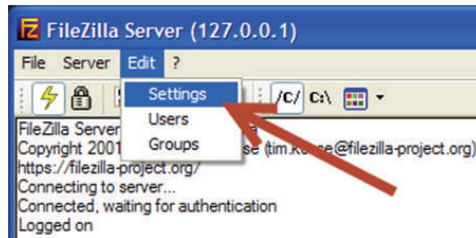
- a) Start FTP Server Interface. The 'Server Address' shown (127.0.1.1) works when the FTP Server and FTP Server Interface reside on the same computer.



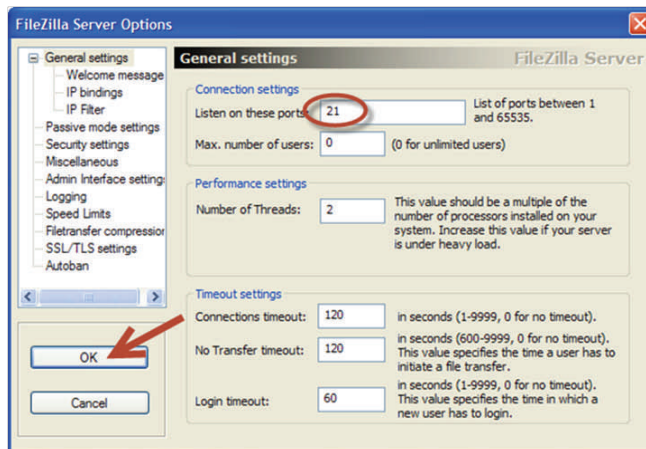
FTP Server interface log shown below shows normal FTP Server status:



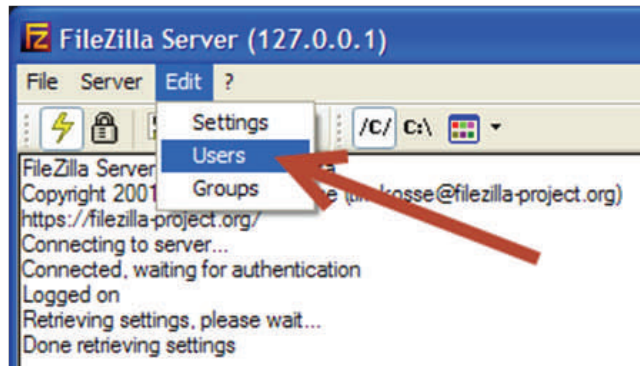
b) Configure FTP Server 'Settings':



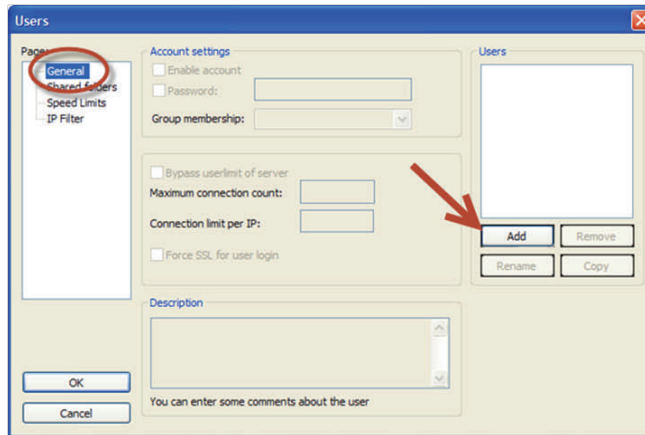
Enter FTP Server 'Listening Port' number. Port 21 is default.



c) Configure User Accounts:



Add User Account for login to FTP Server
Select [General] tab. Add User as follows:

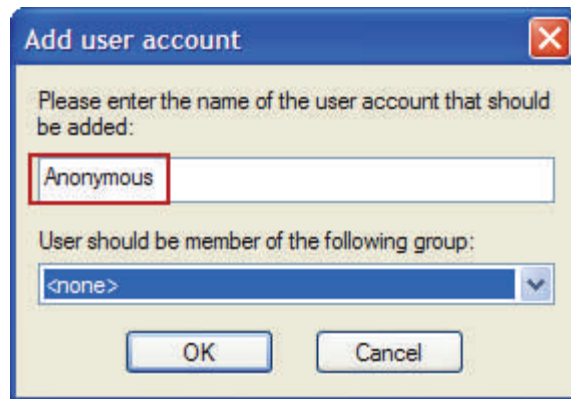


Default user account name is “Anonymous”.

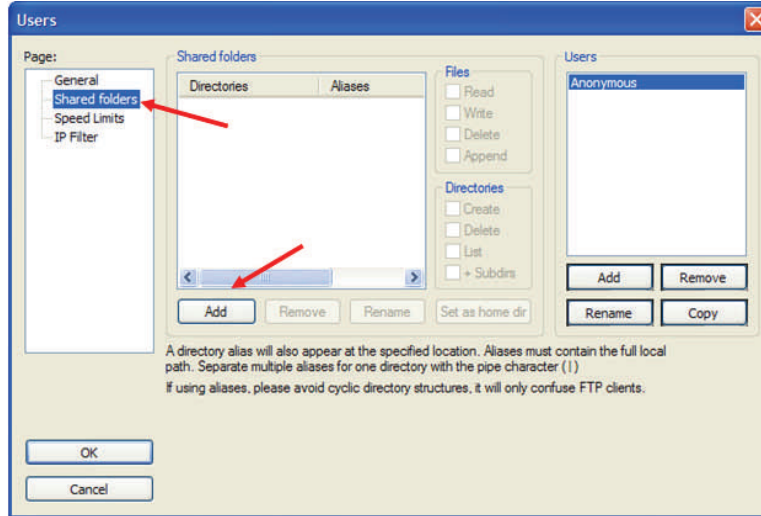
Password for “Anonymous” user is any text string in email address format (i.e. you@me.com).
No “Group” is required for “Anonymous” user.

Use custom user account name/password for additional security.

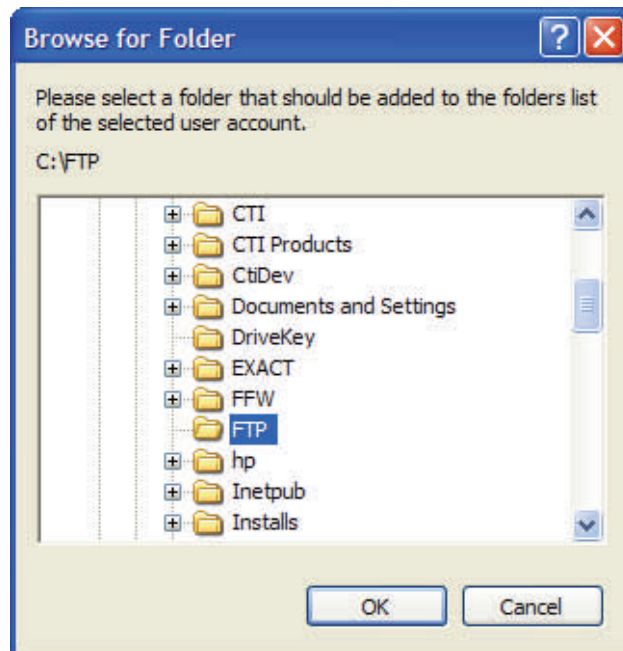
Custom user account names/password must be entered in ‘Module Configuration’ page in the ACP1 web server.



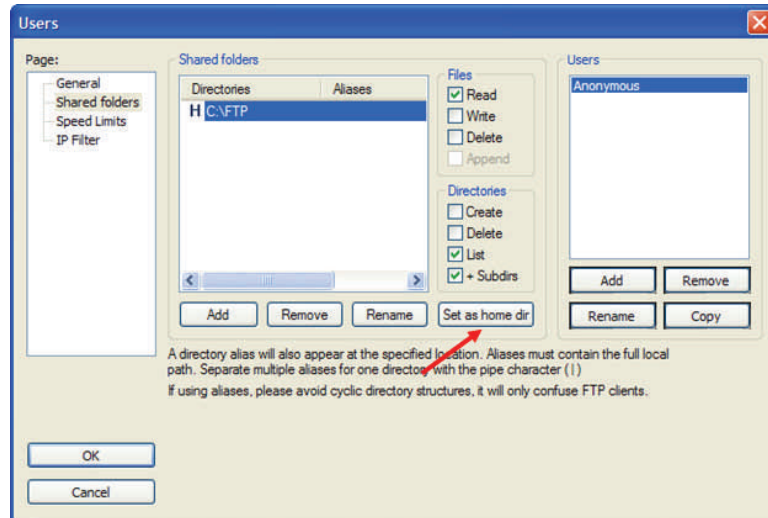
- d) Configure the directories/folders that can be accessed by FTP Client:
Select [Shared folders] tab.
Press [Add] to configure directories accessible by ACP1 FTP Client.



Browse for folder that will serve as “root directory” for files sent by ACP1 FTP Client.
The example below shows the directory C:\FTP that was previous created.
You must select an existing folder to complete FTP Server setup.



The selected directory is shown in the “Shared folders” window. Select [Set as home dir] to mark as FTP Server “root” directory.

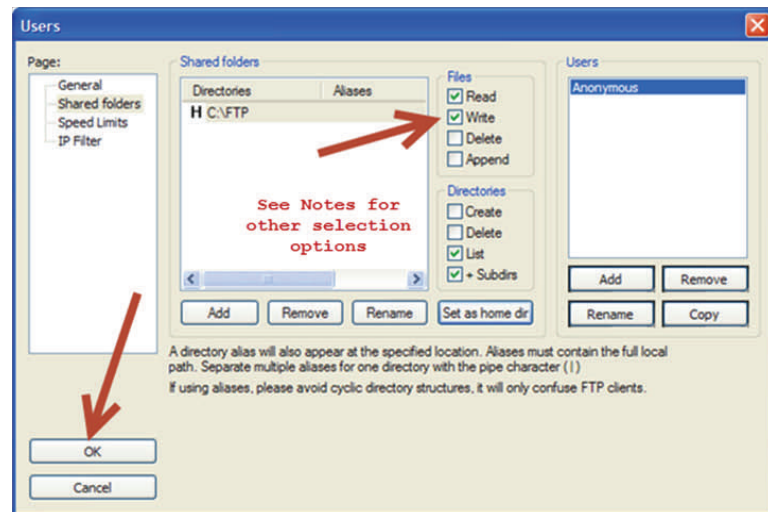


e) Configure file access that FTP Server will allow:

Select [Write Files] option to allow ACP1 FTP Client to send data files to FTP Server. This is required for use with the ACP1 co-processor.

[Delete Files] option allows the FTP Client to overwrite existing files (with same file name). This option is recommended when used with the ACP1 since files can be overwritten if network connection is lost while a file transfer is in progress.

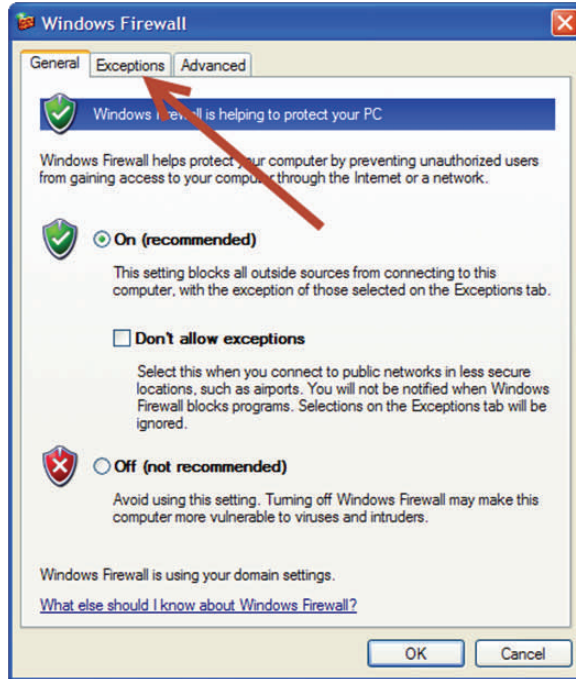
[Create Directories] option should be checked if ACP1 FTP Client needs to create and send files to one or more sub-directories (under Home directory).



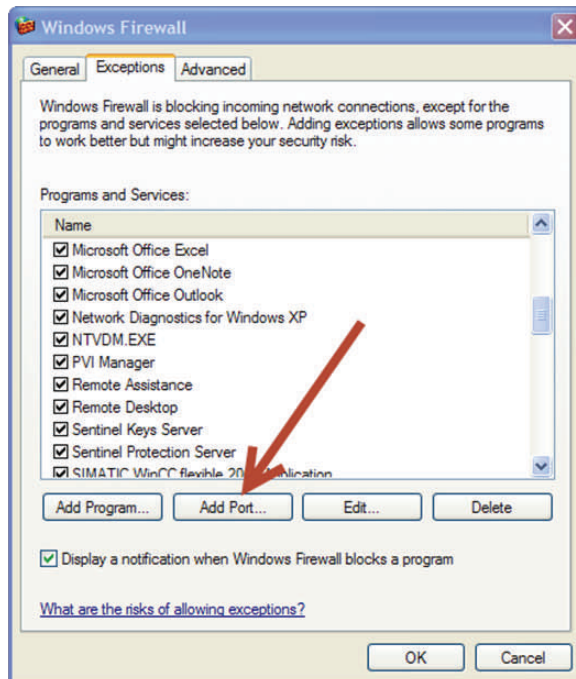
This completes the FTP Server setup. You must now configure the firewall for FTP operation.

4) Create Firewall Exception for accessing FTP Server .
This example uses the 'Windows Firewall'.

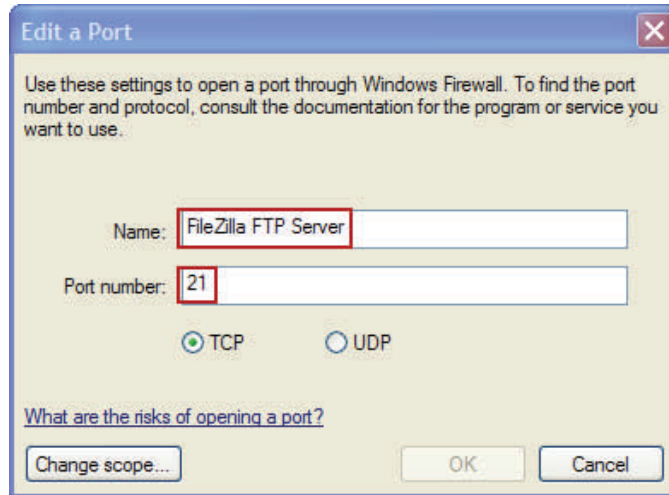
a) Display 'Windows Firewall' and select [Exceptions] tab:



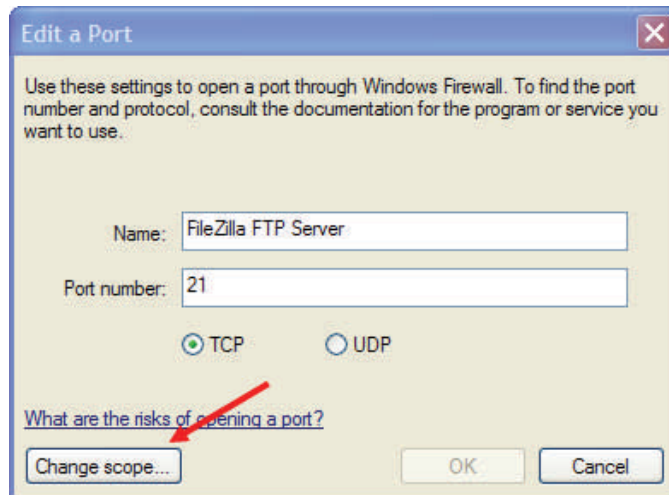
b) Select [Add Port...]



- c) Type in Exception Name and FTP Server listing port as noted above in Section 3b. Default TCP port number is 21.



- d) Select [Change scope...] button.



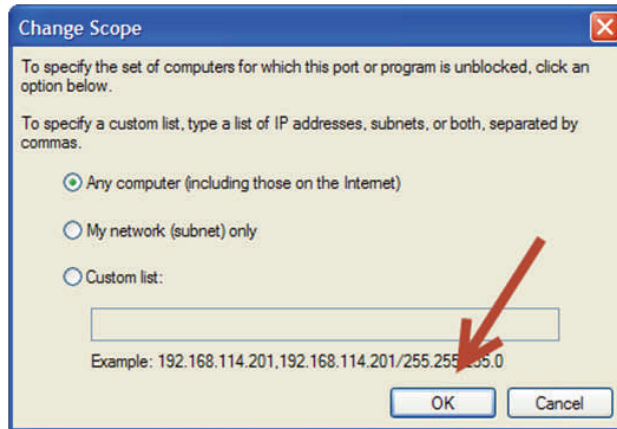
e) Select [Change scope...] button.

This option provides protection from unauthorized access to the computer through the Firewall "Exception" that was just created.

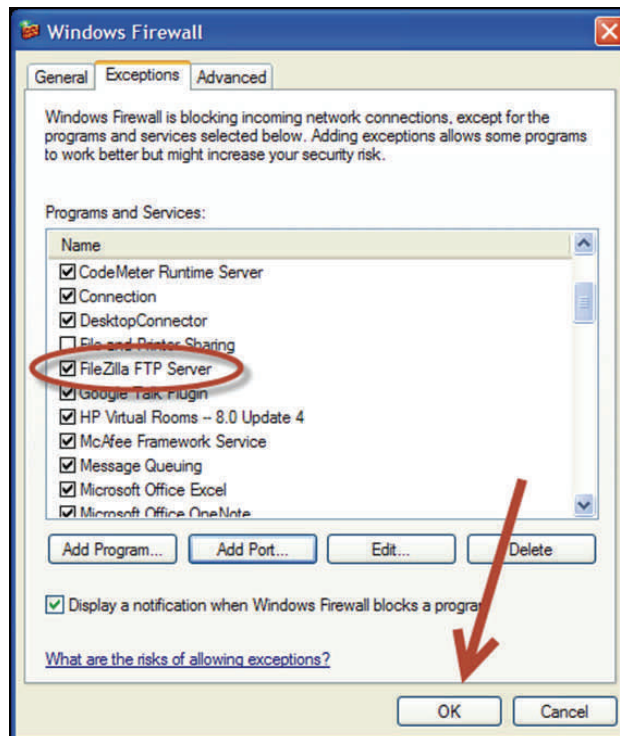
The most secure selection is "Custom list" where the IP Address of each FTP Client is entered so that only those devices can access the FTP Server directories.

The [My network (subnet) only] selection provides a more flexible secure option when all FTP Clients/Servers reside on the same LAN.

The default selection [Any internet computer] should be used only when remote access to the FTP Server is required.



f) The new entry should appear in list of Exceptions:



The FileZilla FTP Server is now ready to use.