

Application Note:

Recovering Communications to a Slice I/O Module When You Don't Know Its IP Address

In order to configure a Slice I/O module, you must enter its IP address in the URL of your web browser. If you forget the IP address, this Application Note shows how to re-establish communications with the module.

There is no factory-reset push button. To recover the module you must download and install utility software from the CTI website. This software allows you to communicate with the module to determine and/or change its IP Address.

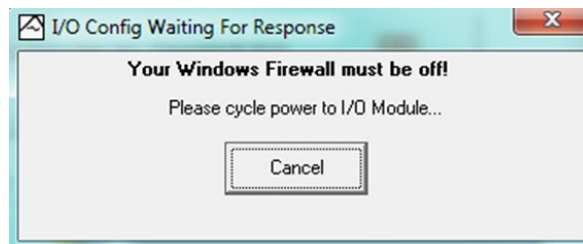
1. Download the utility software from the CTI website from this page.

<http://www.controltechnology.com/products/2500-Series-Slice/Slice-I-O-with-Ethernet/2500S-23-1050>

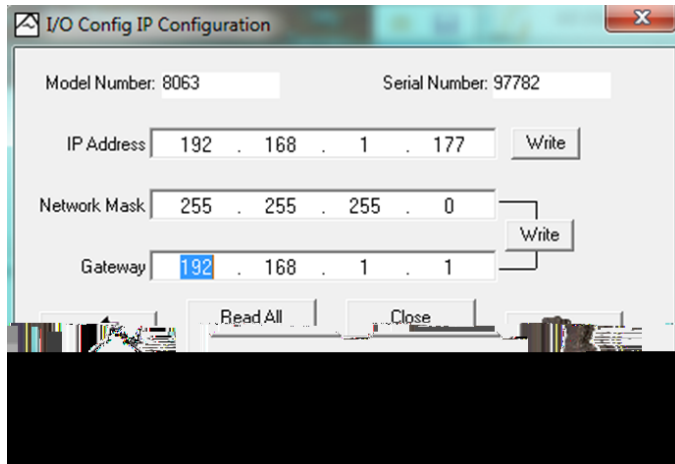
2. Look for the link called "Slice I/O Utility Software". Install the software on your PC.
3. Make sure your Windows Firewall is turned OFF. Run the program "IP Address Discovery" under the ICL Tools folder on your start menu.



4. Click the "IP Configuration" button. You should get this popup:



2. A screen will pop up showing the current IP Address. Even if you are not changing the IP Address, you must click WRITE and REBOOT to bring the Slice I/O module out of configuration mode and into normal operating mode.



Control Technology Inc.

5734 Middlebrook Pike, Knoxville, TN 37921-5962
Phone: +1.865.584.0440 Fax: +1.865.584.5720
www.controltechnology.com