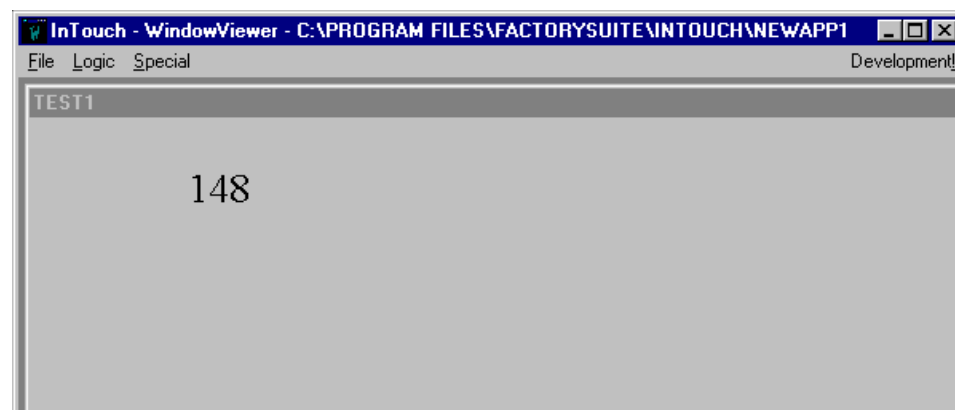


20. Enter **WX1** for the Item.
21. Select **Save** then **Close**.

22. Go to **Run Time** mode and you should see the analog display incrementing.



CTI 2500 Series PLC System Application Note

Using the CTI 2572 with Wonderware V7.0

Hardware Requirements

1. A PC with an Ethernet TCP/IP IEEE 802.3 network adapter card installed.
2. A CTI 2500 Series or Simatic® 505 I/O chassis with a power supply and PLC installed.
3. A 2572 Ethernet TCP/IP Adapter Card installed and configured in the I/O chassis.
4. An Ethernet IEEE 802.3 network hub and cables to attach to the 2572 and the PC network adapter card.

Software Requirements

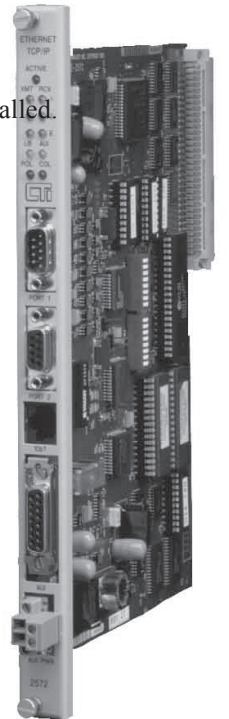
1. Wonderware V7.0 application software loaded on the PC.
2. CTI 2572-DDS2 DDE Driver V4.1 minimum software installed on the PC.

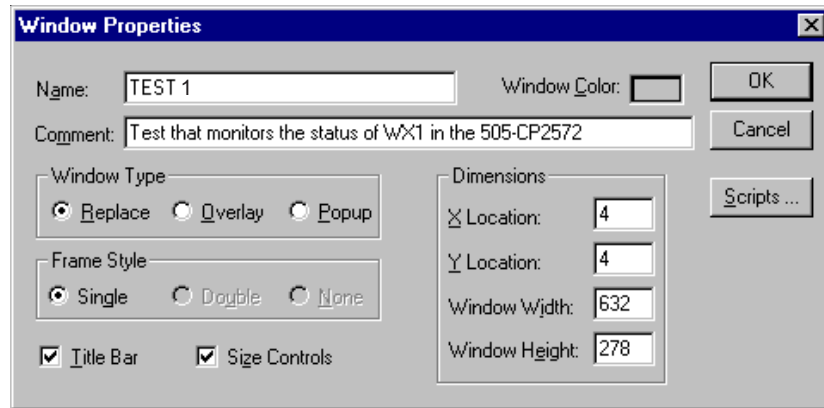
Implementation Steps

The example illustrated in this application note shows how to create a simple Wonderware application to display the timer in the first WX word of the 2572's I/O configuration.

1. Start the 2572 DDE Server.
2. Select **Configure/Topic**.
3. In the Topic Definition dialog box select the **NEW** option.
4. Select a DDE Topic Name (i.e. TestPLC).
5. Enter the Station Name/Address (i.e. 100.100.100.1) of the 2572. This is the Ethernet IP address of the 2572.
6. Choose the PLC Model to be used and the desired Protocol.
7. Click **OK** then **Done**.

8. Start Intouch and select **File/New**. Follow the steps in the **Create New Application** window. Double click on the application you created to start Window Maker and select **File/New**.
9. Enter a Name for the Application (i.e. TEST). Enter a comment to help in documentation. Click **OK**.

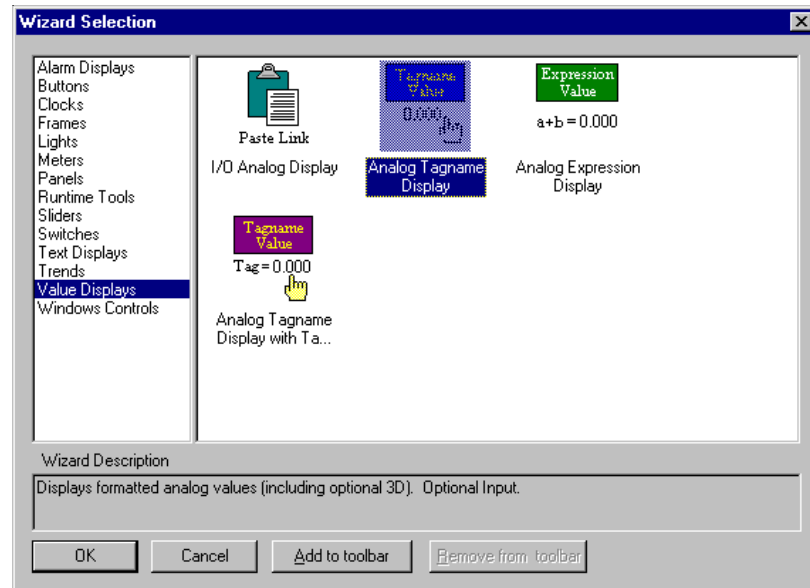




Note:

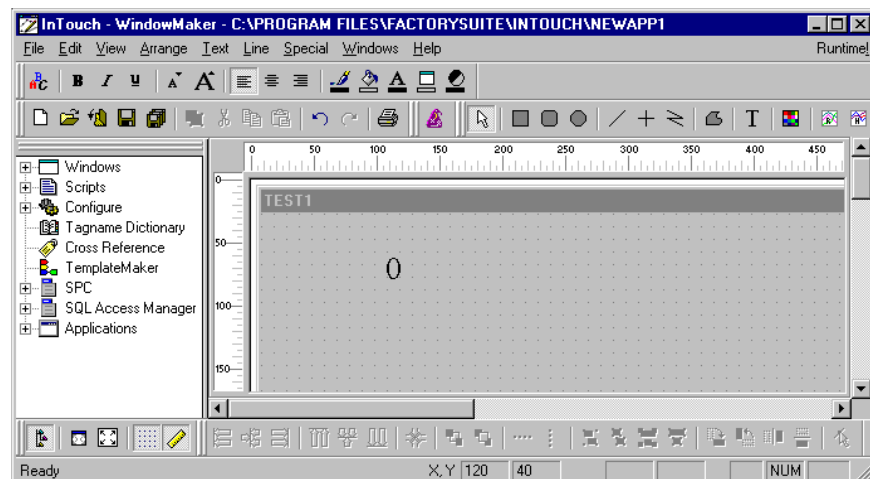
WX1 is the module status word of the 2572. The high byte contains status bits and the low byte contains a counter value that is read from the module and increments from 0 to 255. This example reads back this counter value and displays it on the screen.

10. Choose the **Wizards** icon and choose **Value Displays**. Select an **Analog Tagname Display**. Click **OK**.

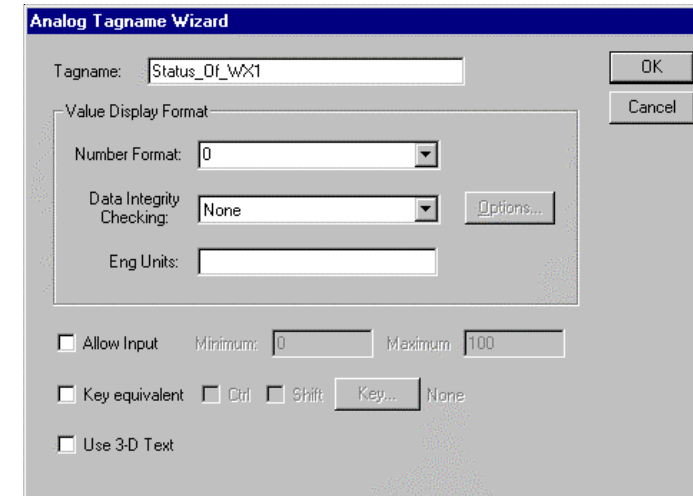


11. You can now drop the **Analog Tagname Display** button into the gray box on the screen.

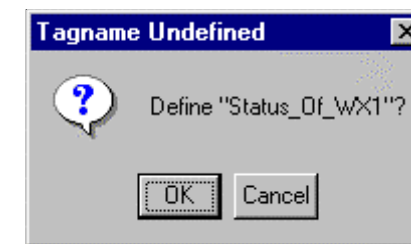
12. Double click the **Analog Tagname Display**.



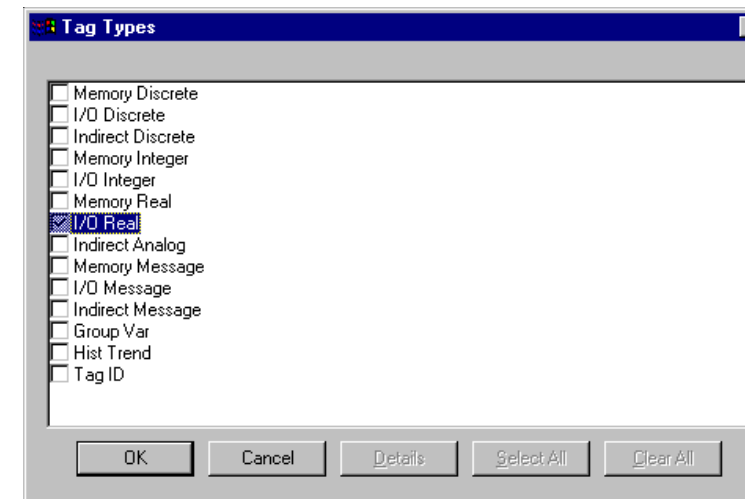
13. In the Analog Tagname Wizard dialog box assign a tagname (i.e. Status_Of_WX1). Select the **Number Format** "0". Click **OK**.



14. You will then be prompted to define the Tagname. Click **OK**.



15. Click the **Type** button and select **I/O Real**. Click **OK**.



16. Click the **Access Name** button and select **Add**.

17. The Access Name and the Topic Name will be the same as the Topic defined in the DDE server (i.e. TestPLC).

18. The Application Name will be CTI2572.

19. Select **OK** then **Close**.