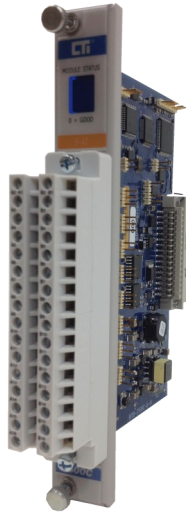




2500C-8-AI Analog Input Module



DESCRIPTION

The 2500C-8-AI is designed for CTI's 2500 Series Compact System. The module provides 8 inputs that can be configured for voltage or current signals on a channel by channel basis.

FEATURES

- 8 analog inputs
- Supports Classic and Classic Plus Modes
- 7 Segment Display for Module Status indication
- No user calibration
- Accepts voltage or current signals
- Accepts bipolar or unipolar ranges
- Software Configurable Range Selection
- Uses 2500C-32F removable wiring connector

2500-8-AI Default Shipment Settings	
Operation Mode	Classic Mode
Logon	8WX
Signal Range	0 to 20 mA
Digital Filtering	Enabled
Offset Scaling	Disabled

Input Specifications		
Operation Mode Support (See Note 1)	Classic Mode	Classic Plus Mode
Module Logon	8WX	8WX/8WY
Module Update Time all modes	3.5mS	
Digital Filtering Time Constant	200mS	200mS
Signal Range(Note 2)		
Unipolar	0 to 5VDC, 0 to 20mA	0 to 10VDC, 0 to 5VDC, 0 to 20mA
Bipolar Available in Classic Plus Mode Software configured	NA	+/- 5VDC, +/- 10 VDC +/- 20mA
Input Signal Type	Current	Voltage
DC Input Resistance	250Ω	780KΩ
Repeatability	0.0025%	
Accuracy @ 25°C	0.25% of full scale	0.15% of full scale
Resolution (15 bits plus sign)	Unipolar 0 to 32000	Bipolar -32000 to 32000
0 to +5VDC or +/- 5VDC	156μV	
0 to +10 VDC or +/-10VDC	312μV	
0 to +20mA or +/-20mA	.625μA	
Common Mode Rejection Digital Filtering Enabled	>95db @ 100Hz	
Normal Mode Rejection Digital Filtering Enabled	-25db @ 100Hz	
Backplane Power (MAX)	.706 watts	
Input ESD Protection	IEC 1000-4-2 Level 4	
Over-range Protection	± 500V	
Isolation	Channel to Channel 200V± Channel to Backplane 1500VDC	
Operating Temperature Range	0°C to 60°C (32°F to 140°F)	
Agency Approvals Pending	UL, ULC, UL Class 1, Div 2, CE	
Shipping Dimensions and Weight	223.84mm x 109.86mm x 34.93mm, 0.234kg	
Storage Temperature Range	-40°C to 85°C (-40F °to 185°F)	
Relative Humidity	5% to 95% (non-condensing)	
Note 1:	Classic or Classic Plus modes are jumper selectable for the module.	
Note 2:	In Classic Mode 0 to 5VDC or 0 to 20mA signal range is selected via jumpers for each channel. In Classic Plus Mode additional signal ranges are software configurable.	



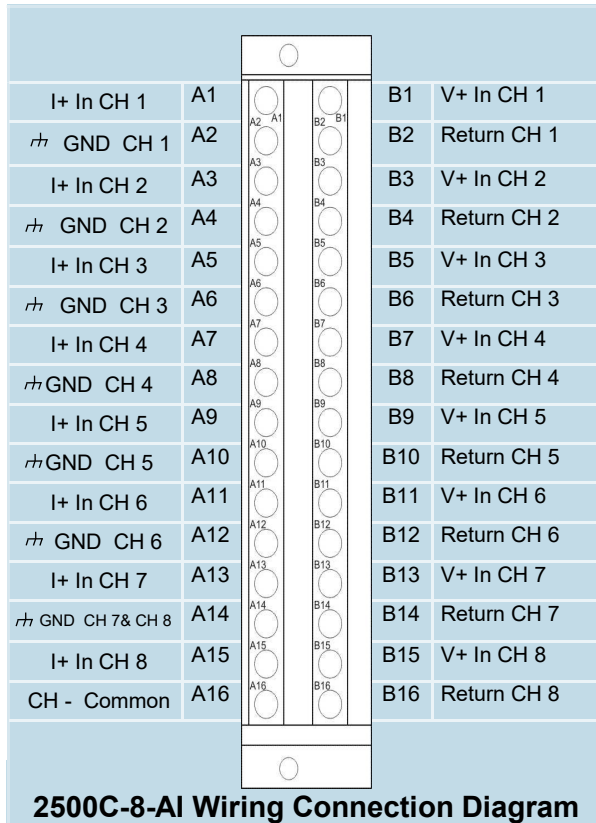
Control Technology Inc.

5734 Middlebrook Pike, Knoxville, TN 37921-5914
Phone: +1.865.584.0440 Fax: +1.865.584.5720
www.controltechnology.com





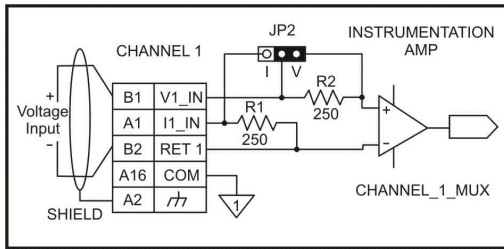
2500C-8-AI Analog Input Module



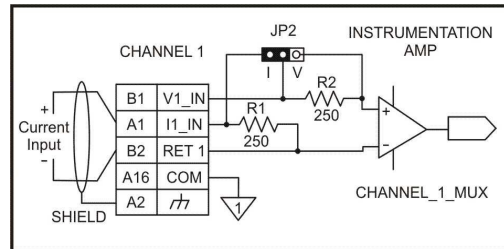
Note:

The 2500C-8-AI Analog Input Module uses CTI Wiring Connector 2500C-32F. Please see the wiring connector specification table below. This connector is ordered separately from the module.

2500C-32F Specifications	
Connector Style	Removable
Number of Wiring Connections	32 point
Wire Gauge	14 to 22AWG
Screw Torque Value	5.22 lb-in
Current Rating	6A @ 300VAC
Insulation Stripping Length	0.24" 6mm
Connector Material	
Body:	Polycarbonate UL 94V0
Screw :	M3 Zinc plated Steel
Cage Clamp	Nickel Plated Brass
Socket Contact Spring:	Tin Plated Bronze
Retaining Screw:	M3 Zinc Plated Steel



Typical Internal Circuit—Voltage Mode



Typical Internal Circuit—Current Mode

7 Segment LED Code Description	
0	Normal Operation
A	Internal RAM Fail
b	Flash Failure
C	Internal MOVx RAM Failure
d	Shared RAM Failure



Control Technology Inc.

5734 Middlebrook Pike, Knoxville, TN 37921-5914
 Phone: +1.865.584.0440 Fax: +1.865.584.5720
www.controltechnology.com

