



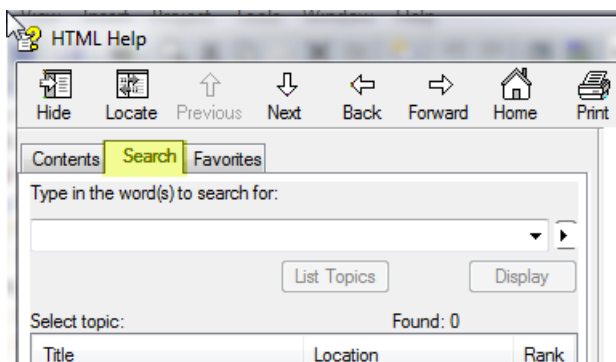
2500P-ACP1: How do upload a program from the ACP1 to my computer?

CTI Workbench allows the user to “save” the project source code to the target (ACP1) and then upload it later into CTI Workbench. In order to upload a program to your computer, it must have had the source files saved to the ACP1.

Two methods can be used to save the source code, as described in CTI Workbench Help file.

The first method is to do a manual save of the source code. The second method is to change the project settings so that the source files are saved to the ACP1 automatically each time the program is downloaded.

To see the help article, choose the “Search” tab to display descriptions for specific topics:



Enter “saving source to target” in the search field.

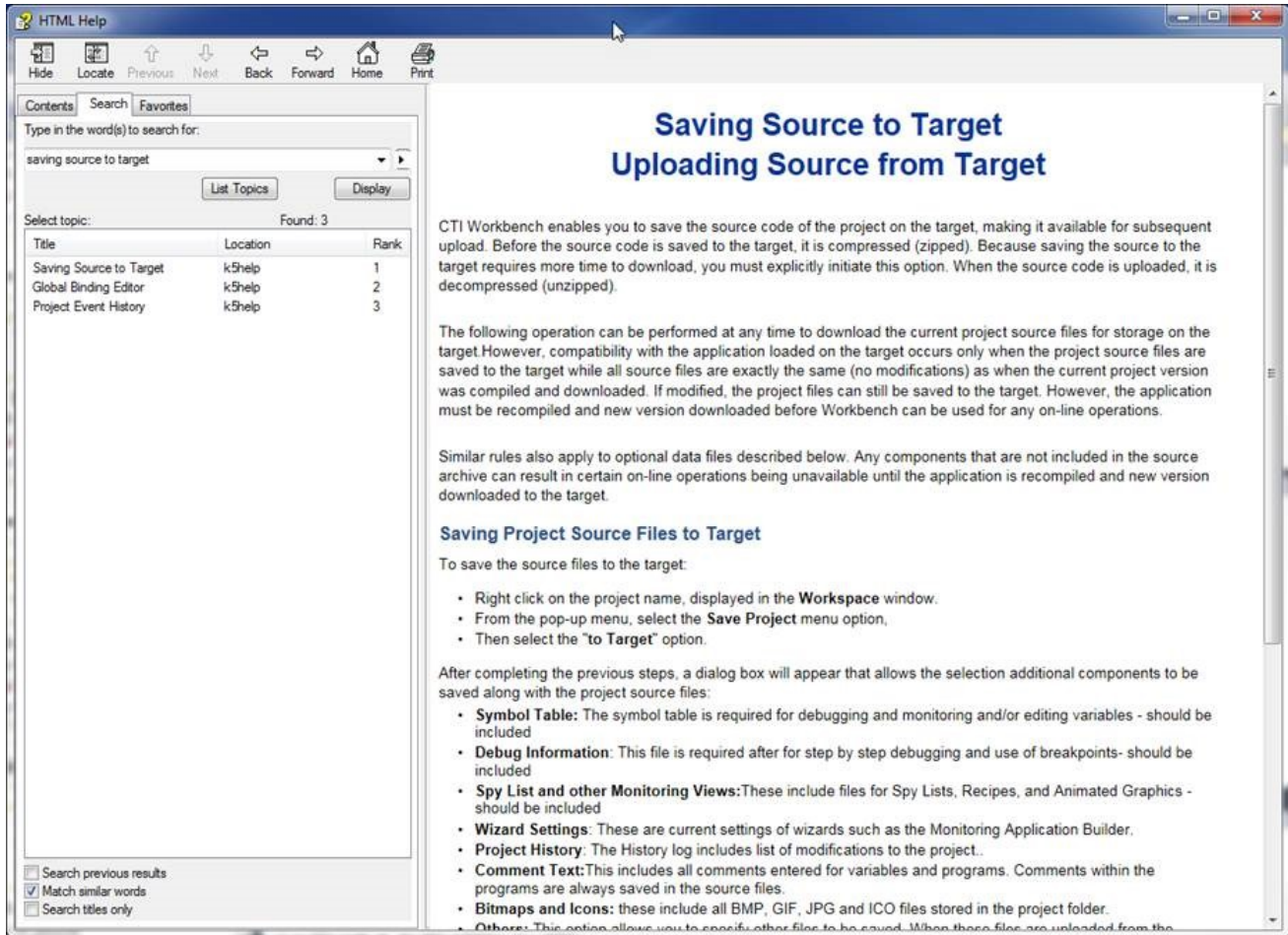
The displayed page describes a manual method for saving the source code on the ACP1 and later uploading it to CTI Workbench when required.

This method can be used any time CTI Workbench is “online” with the ACP1 as described in the online ‘Help’ file.



®

ROCK SOLID PERFORMANCE. TIMELESS COMPATIBILITY.



To get help for changing project setting for automatic download, enter "project settings debugging" in the search field.

The displayed page describes steps required to automatically download the source code each time the project is downloaded to the ACP1.

This method automatically downloads the project source code along with the executable file each time the project is downloaded to the ACP1.



HTML Help

Hide Locate Previous Next Back Forward Home Print

Contents Search Favorites

Type in the word(s) to search for:

project settings debugging

List Topics Display

Select topic: Found: 17

Title	Location	Rank
Project Settings - Debugging	k\$help	1
Saving Source to Target	k\$help	2
Working with external objects	k\$help	3
Project Settings-General	k\$help	4
Libraries of sub-programs and U...	k\$help	5
Project Settings - Runtime	k\$help	6
Running the Application	k\$help	7
Project Settings	k\$help	8
Project Settings - Compiler	k\$help	9
Application Design	k\$help	10
Step by Step Debugging	k\$help	11
On Line Change	k\$help	12
Keyboard Shortcuts	k\$help	13
Using the Control Panel	k\$help	14
Protecting a program	k\$help	15
Definitions	k\$help	16
Using Editors in Test Mode	k\$help	17

Search previous results
 Match similar words
 Search titles only

Project Settings - Debugging

The Debugging category contains settings that are commonly used to configure the debugging environment.

Communications Parameters

This setting allows you to specify IP Address and Port Number used to connect to the Ethernet port of the CTI product . Double-clicking on the value will open a dialog box that allows you to manage the settings. **Port 1100 must be specified for all connections between CTI Workbench and product.**

Download Procedure

This setting allows you to specify the items that will be downloaded to the target while debugging. Project source files are automatically downloaded to the target with each new project download when the **Send source code for later project upload** is selected. This option provides a means of storing the source files associated with each application on the target device. Later, these source files can be uploaded into CTI Workbench when required. The project files automatically included with source file download include all program files, used to compile application program, symbol table (required for program monitoring and editing variable data), debug information (required for step-by-step debugging), spy lists, graphics files, and bitmaps/icons. Any additional support files such project history text files must be explicitly added to be list of items to the downloaded for them to be included in the download procedure.

Always Start Simulator in Cold Start Mode

When this setting is enabled, the simulator will start in **Cold Start** mode (all variables set to their initialized values). When this setting is disabled, the start mode is selected via a dialog window each time the simulator is started. Start mode options are **Cold Start**, **Warm Start** (RETAIN variables restored to last value), or **Hot Restart** (all variables restored to last value).

Cycle Time During Debug

When this setting is enabled, you can edit the cycle time during the debug execution.

Prompt Before Stopping the Application

When this setting is enabled, you must confirm that you want the application to stop.

Prompt Before Downloading the Application Code

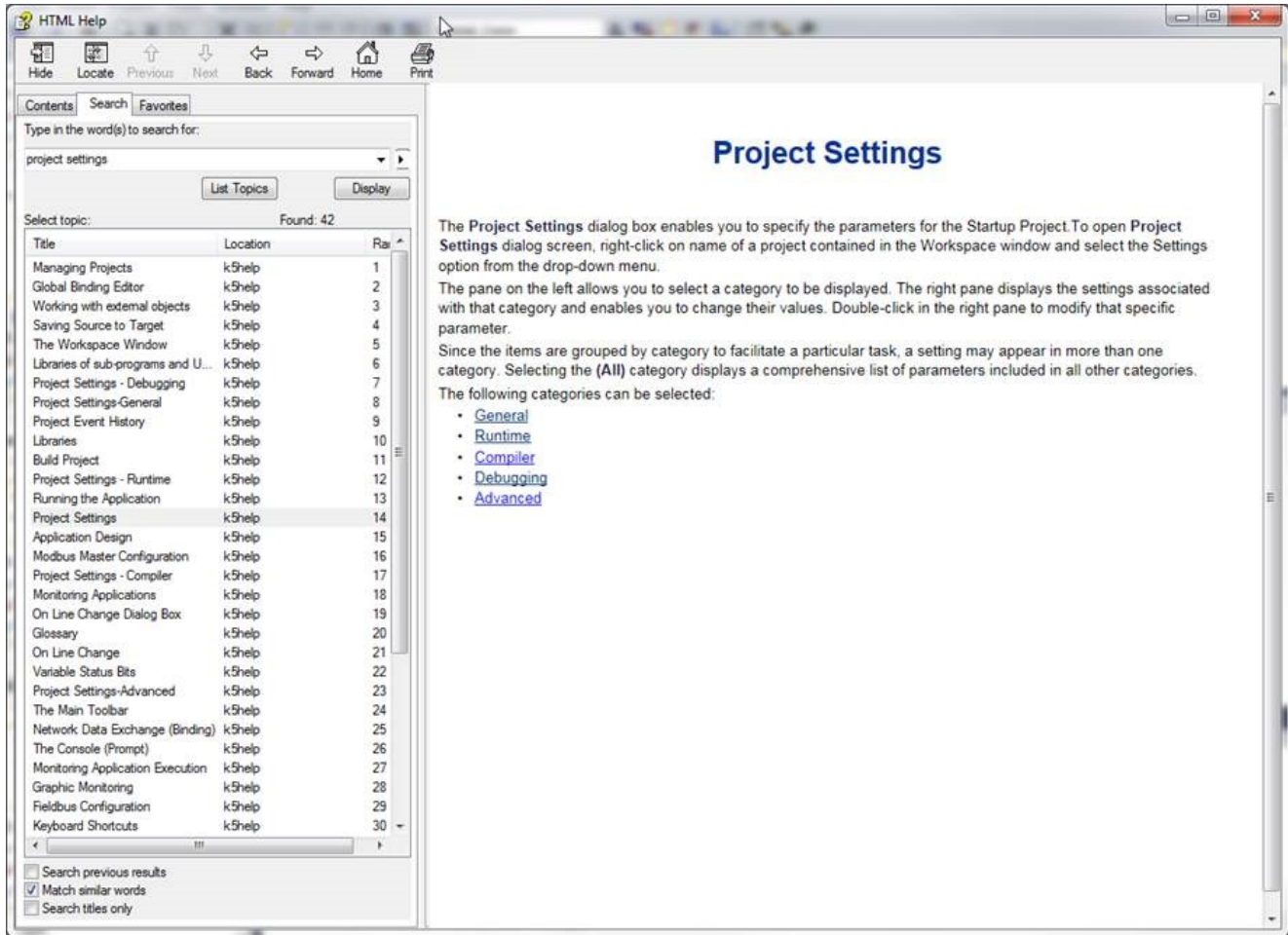
When this setting is enabled, you must confirm that you want to download application code.

Prompt before performing online change

When this setting is enabled, you must confirm each On-Line Change operation before it is attempted.



You also might want to view the “Project settings” page for a description of how to access this configuration window:



CONTROL TECHNOLOGY, INC.

5734 Middlebrook Pike
Knoxville, TN 37921 USA
+1.865.584.0440
www.controltechnology.com
sales@controltechnology.com

Copyright© 2016 Control Technology, Inc.
All Rights Reserved

27JUL2016



ROCK SOLID PERFORMANCE. TIMELESS COMPATIBILITY.